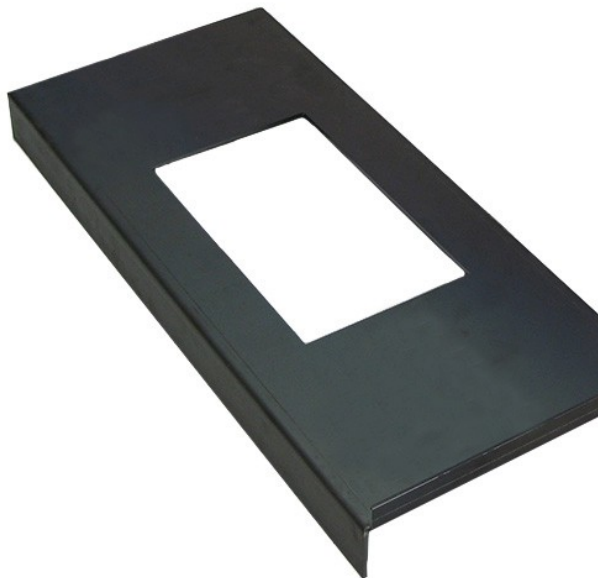


Kirami Grate cradle

Using a grate cradle improves air circulation inside the heater, boosting heating efficiency. The grate cradle also makes the heater easier to clean, as most of the ash that accumulates inside the heater during heating can be removed by simply taking out the grate cradle. The part is only compatible with the CULT and MACU heaters.

Technical Info

WEIGHT	4.1 kg
PRODUCT LENGTH	59 cm
PRODUCT WIDTH	26 cm
PRODUCT HEIGHT	7,5 cm
PRODUCT CODE	AKMACU



Also get accessories



Grate 135x290mm



Warmer feelings.

www.kirami.fi